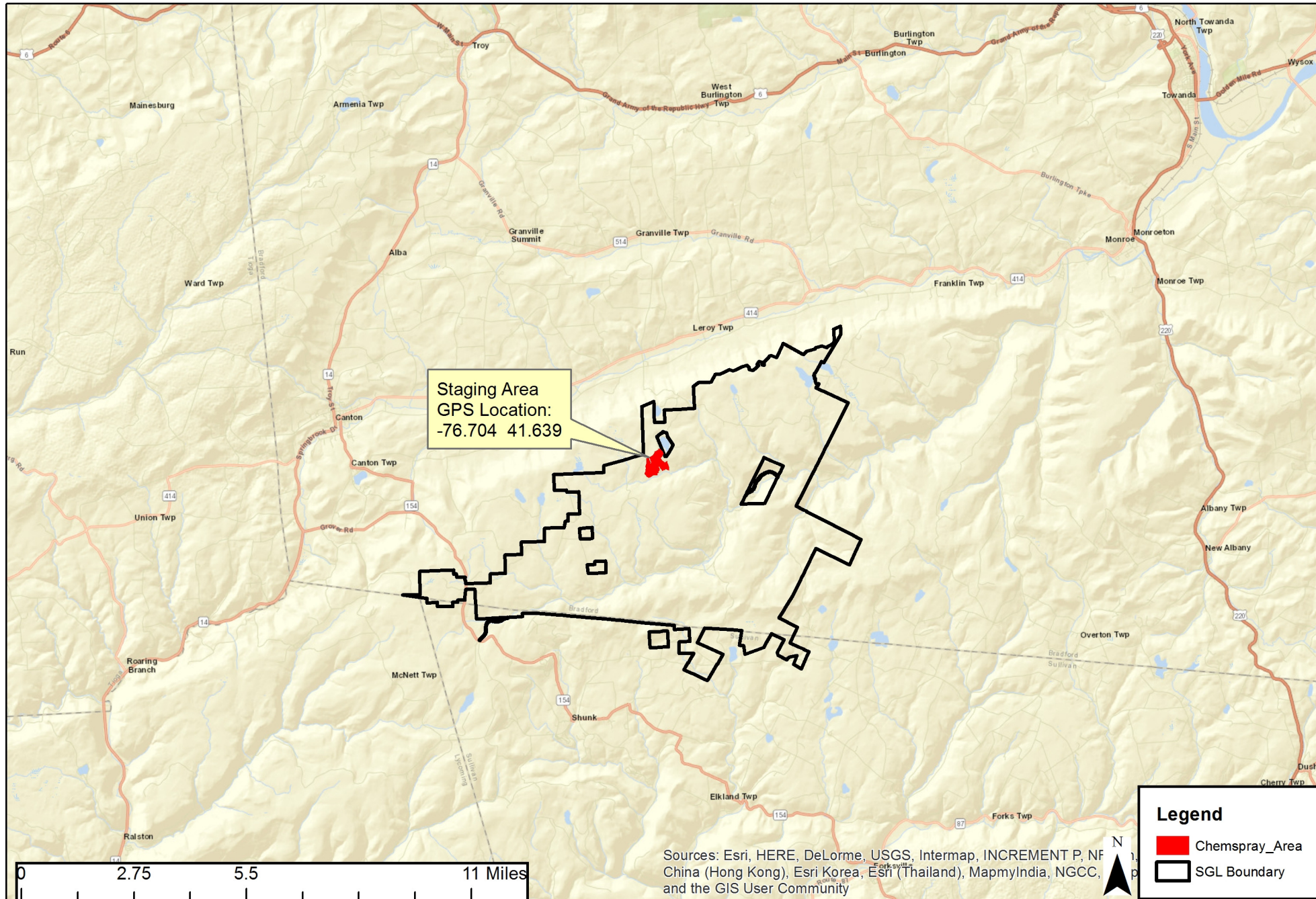


Leroy CCC Herbicide Location Map

SGL 12

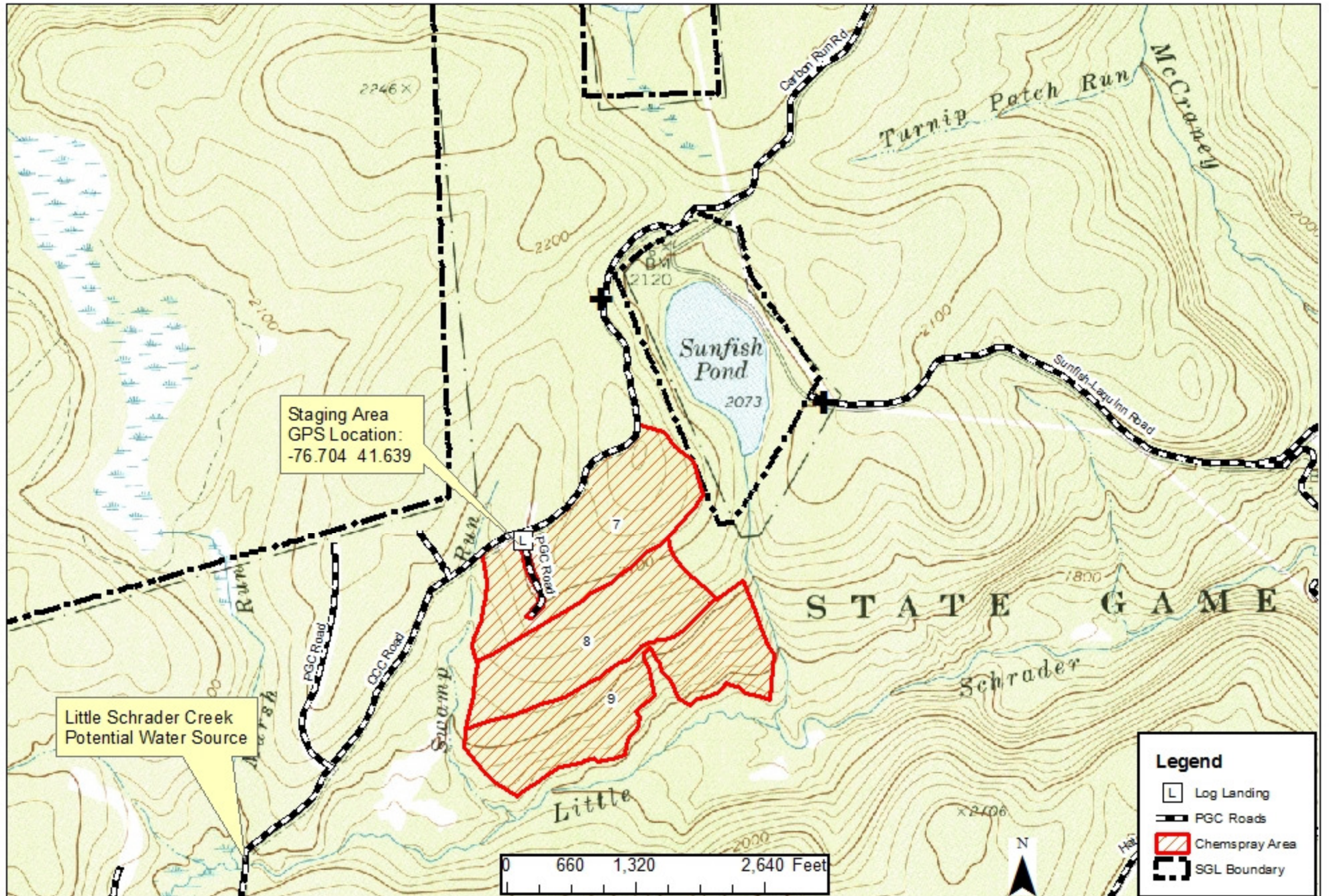
Block 7: 55 Acres
Block 8: 44 Acres
Block 9: 53 Acres
Total: 152 Acres



Leroy CCC Herbicide Map

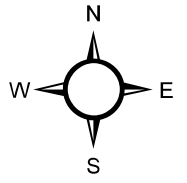
SGL 12

Block 7: 55 Acres
Block 8: 44 Acres
Block 9: 53 Acres
Total: 152 Acres



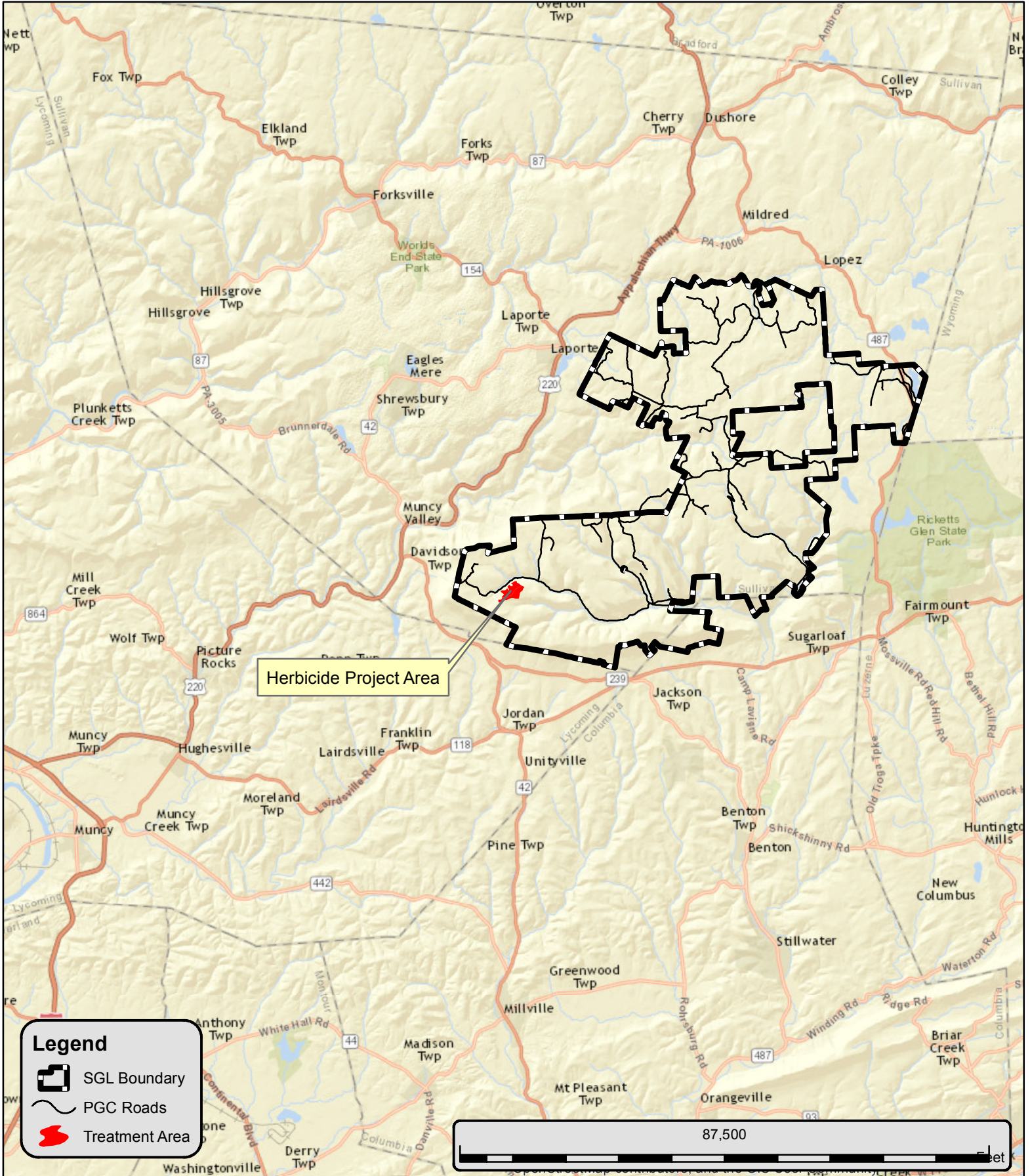
Block 1 - 93 acres
Block 2 - 75 acres

Huckleberry Mountain Herbicide Location Project # 013-18-02 State Game Lands 013 Sullivan County - Davidson Twp



Forester: Brian Williamson

1 inch = 20,833 feet

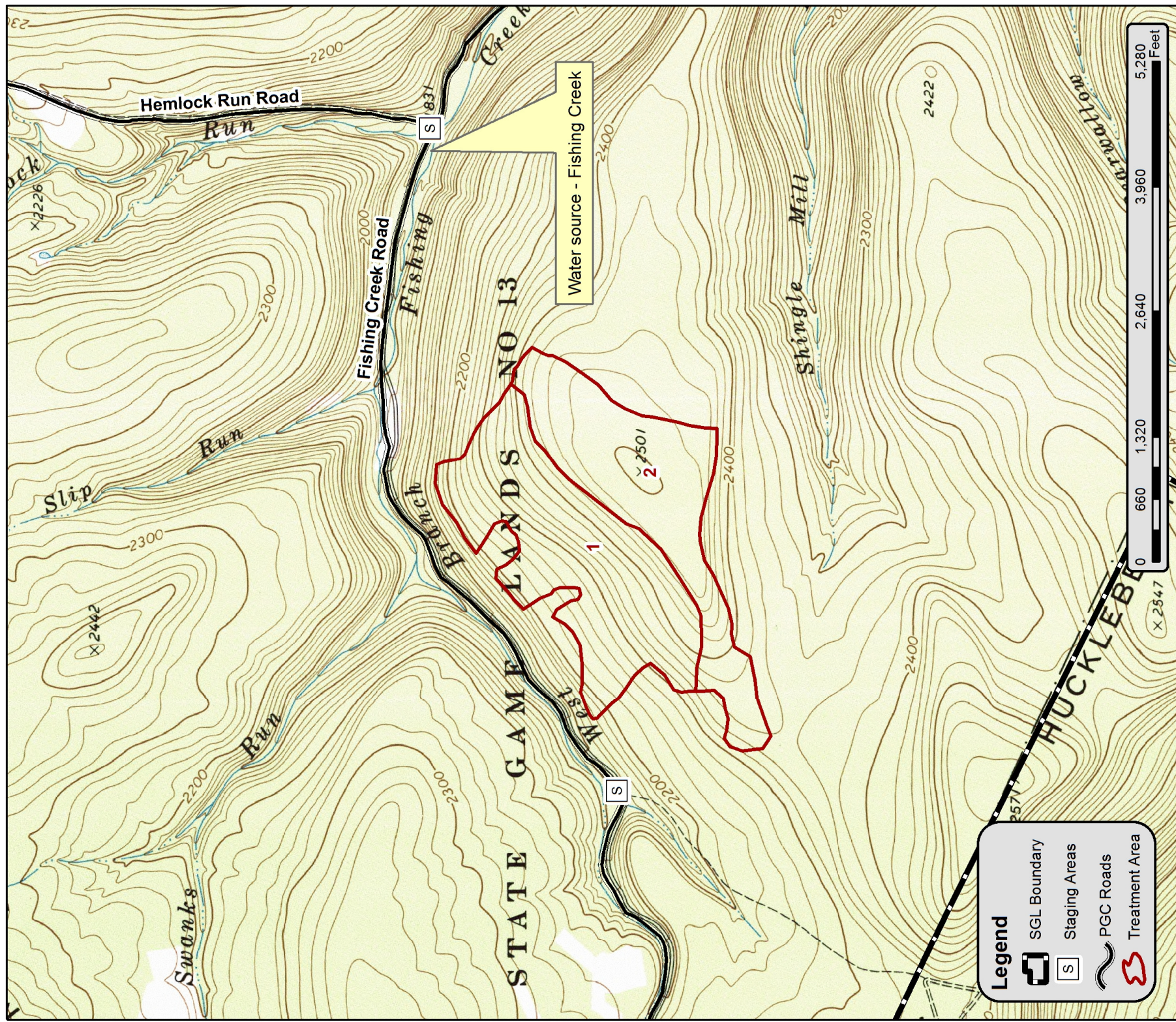
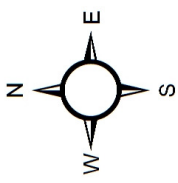


Block 1 - 93 acres
Block 2 - 75 acres

Huckleberry Mountain Herbicide
Project # 013-18-02
State Game Lands 013
Sullivan County - Davidson Twp

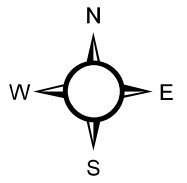
Forester: Brian Williamson

1 inch = 1,320 feet



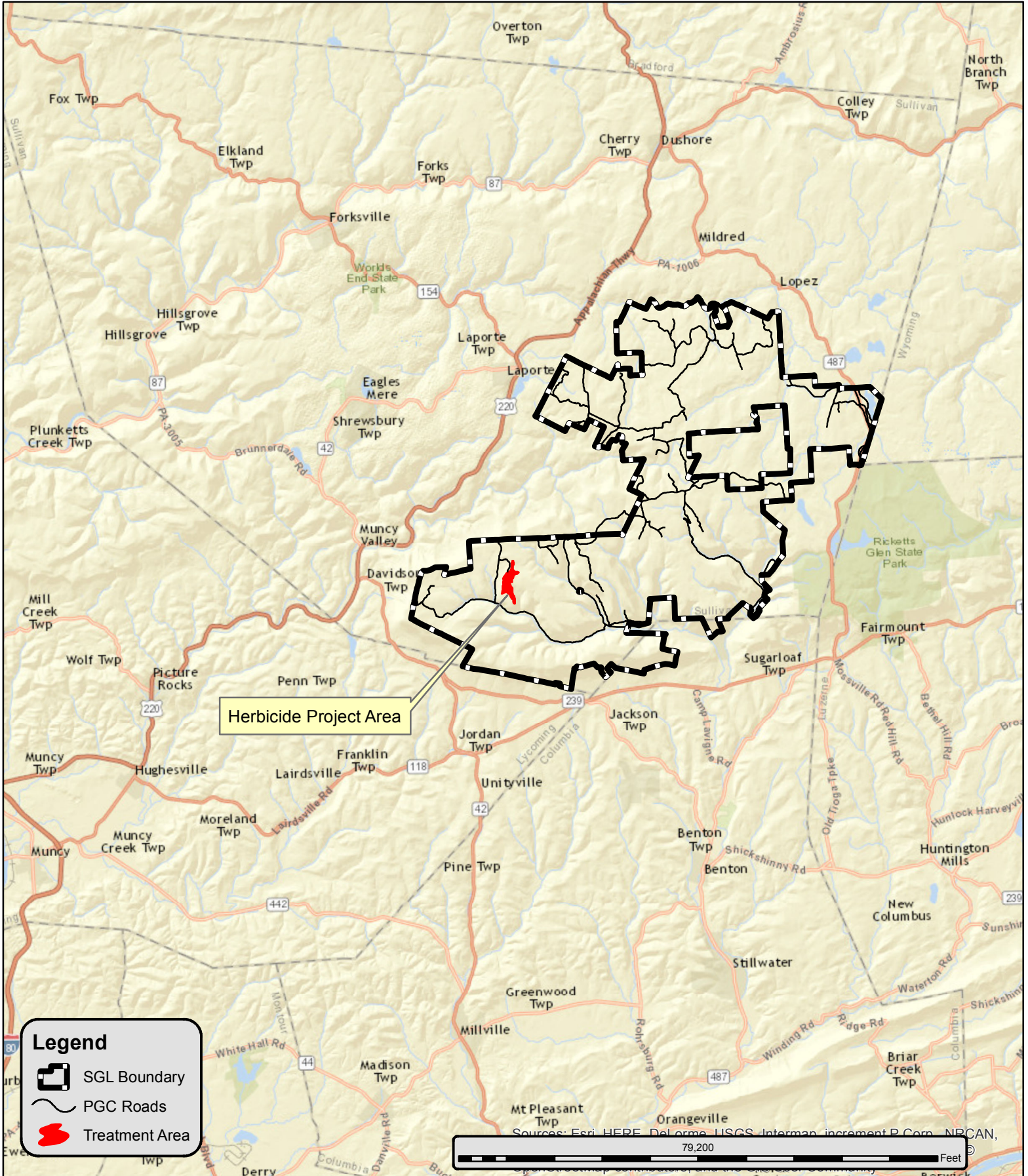
Block 1 - 158 acres

Graces Arrival 2 Herbicide Location Project # 013-18-01 State Game Lands 013 Sullivan County - Davidson Twp



Forester: Brian Williamson

1 inch = 20,833 feet

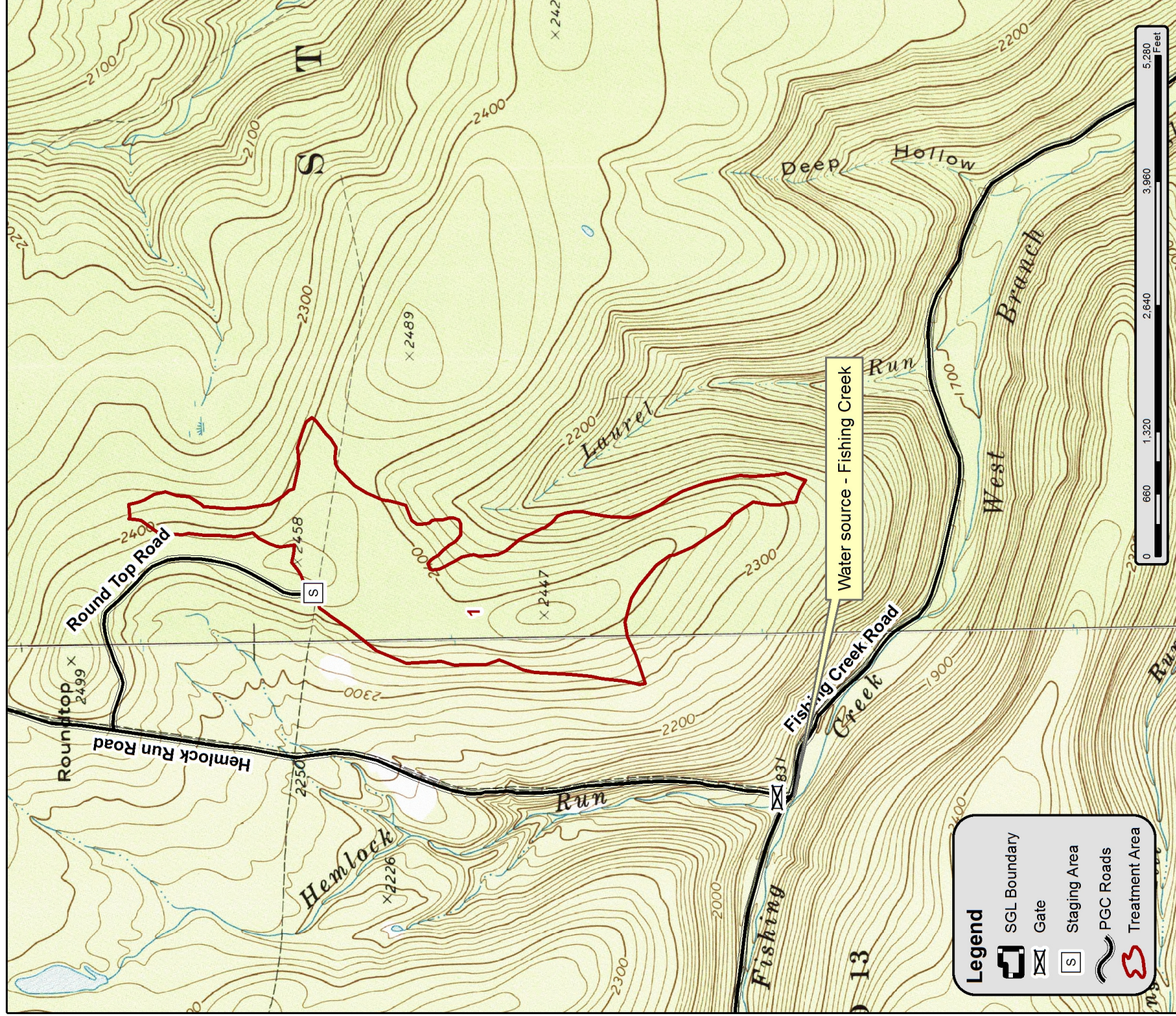
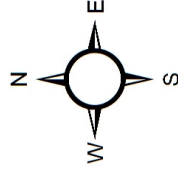


Block 1 - 158 acres

Graces Arrival 2 Herbicide
Project # 013-18-01
State Game Lands 013
Sullivan County - Davidson Twp

Forester: Brian Williamson

1 inch = 1,320 feet



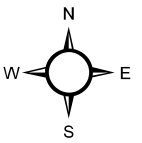
Block 6 - 22 acres
Block 7 - 34 acres
Block 8 - 53 acres
Total treated area - 109 acres

Glass Dutchman Herbicide Location

Project # 013-18-03

State Game Lands 013

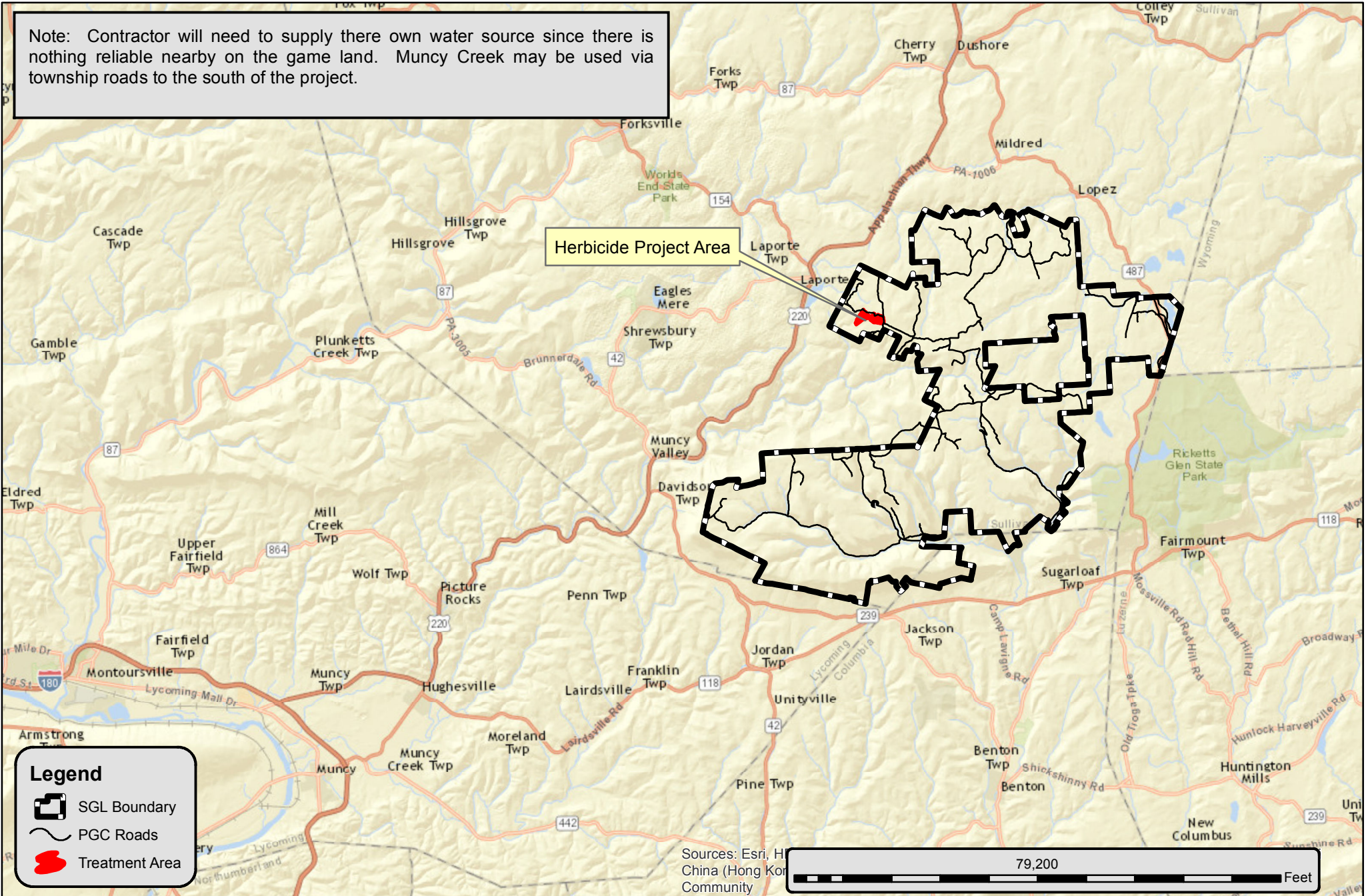
Sullivan County - Laporte Twp



1 inch = 20,833 feet

Forester: Brian Williamson

Note: Contractor will need to supply their own water source since there is nothing reliable nearby on the game land. Muncy Creek may be used via township roads to the south of the project.



Legend

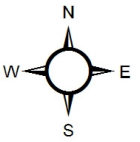
- SGL Boundary
- PGC Roads
- Treatment Area

Sources: Esri, China (Hong Kong), Community

79,200 Feet

Block 6 - 22 acres
Block 7 - 34 acres
Block 8 - 53 acres
Total treated area - 109 acres

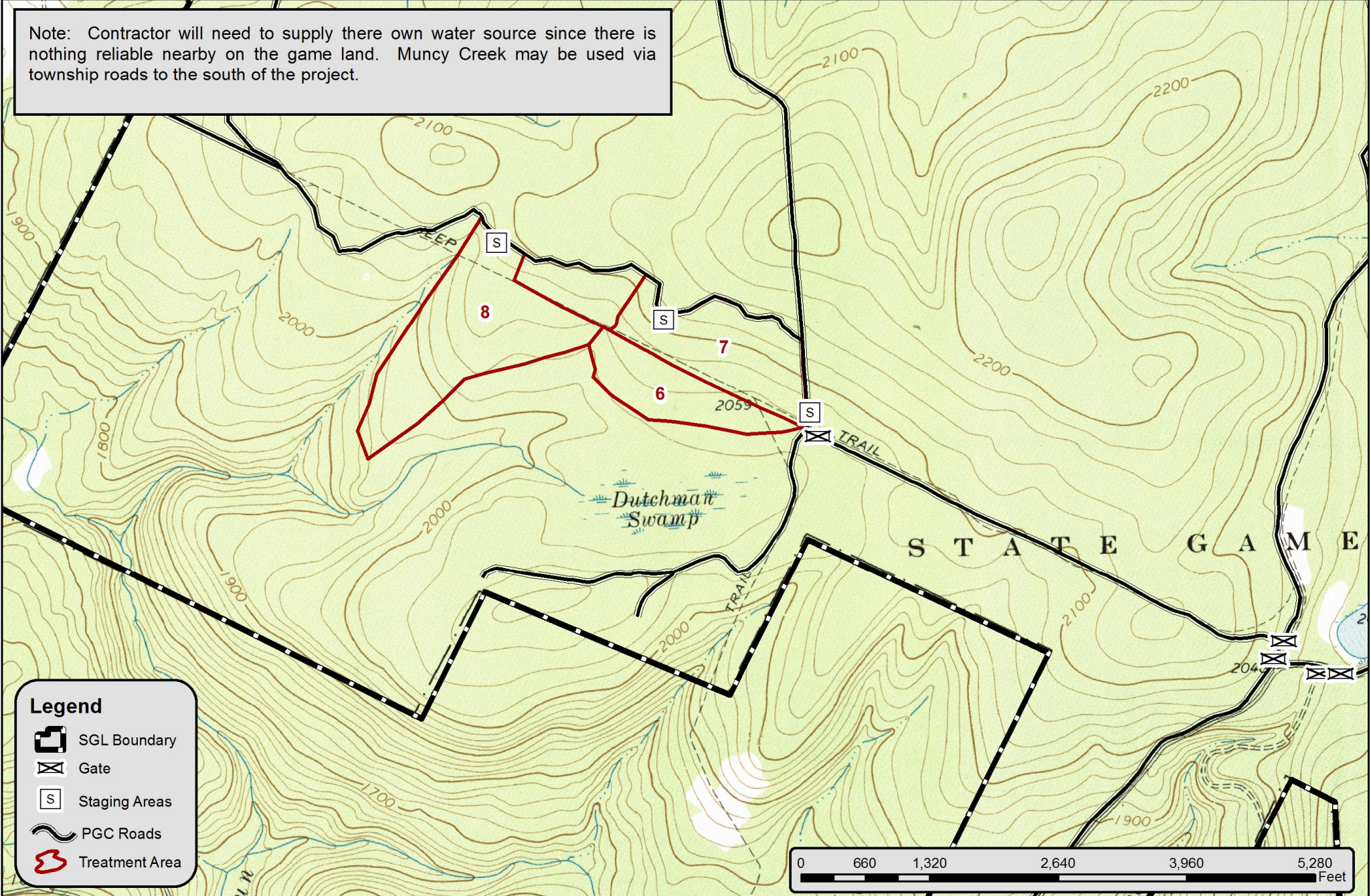
Glass Dutchman Herbicide
Project # 013-18-03
State Game Lands 013
Sullivan County - Laporte Twp



1 inch = 1,320 feet

Forester: Brian Williamson

Note: Contractor will need to supply there own water source since there is nothing reliable nearby on the game land. Muncy Creek may be used via township roads to the south of the project.



Legend

- SGL Boundary
- Gate
- Staging Areas
- PGC Roads
- Treatment Area

